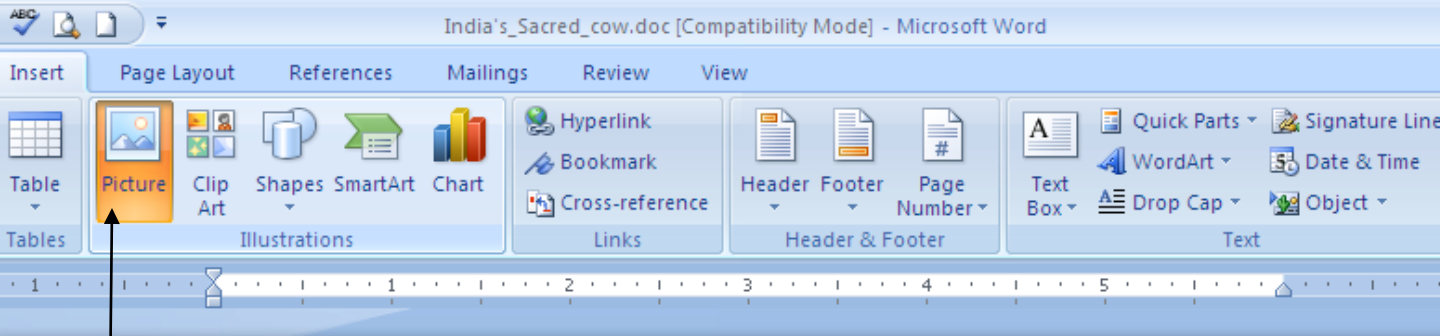


How to Insert My Photo (or CG) into My Document

Office 2007



Marvin Harris

1995 "India's Sacred Cow" Reprinted in *Seeing Ourselves: Classic, Contemporary and, and Cross-Cultural Readings in Sociology*, 3rd Edition John J Macionis and Nijole V. Benokraitis, ed

Editor's Note: A investigate how e everyday strategi article, he offers hungry -- refuse i

Whenever I get in lifestyles, someo India refuse to ea cow conveys a re and popular allus inscrutable Orien

It is comforting t spiritual values a
1 77

First open the document into which you want to insert a picture. Then locate your picture.

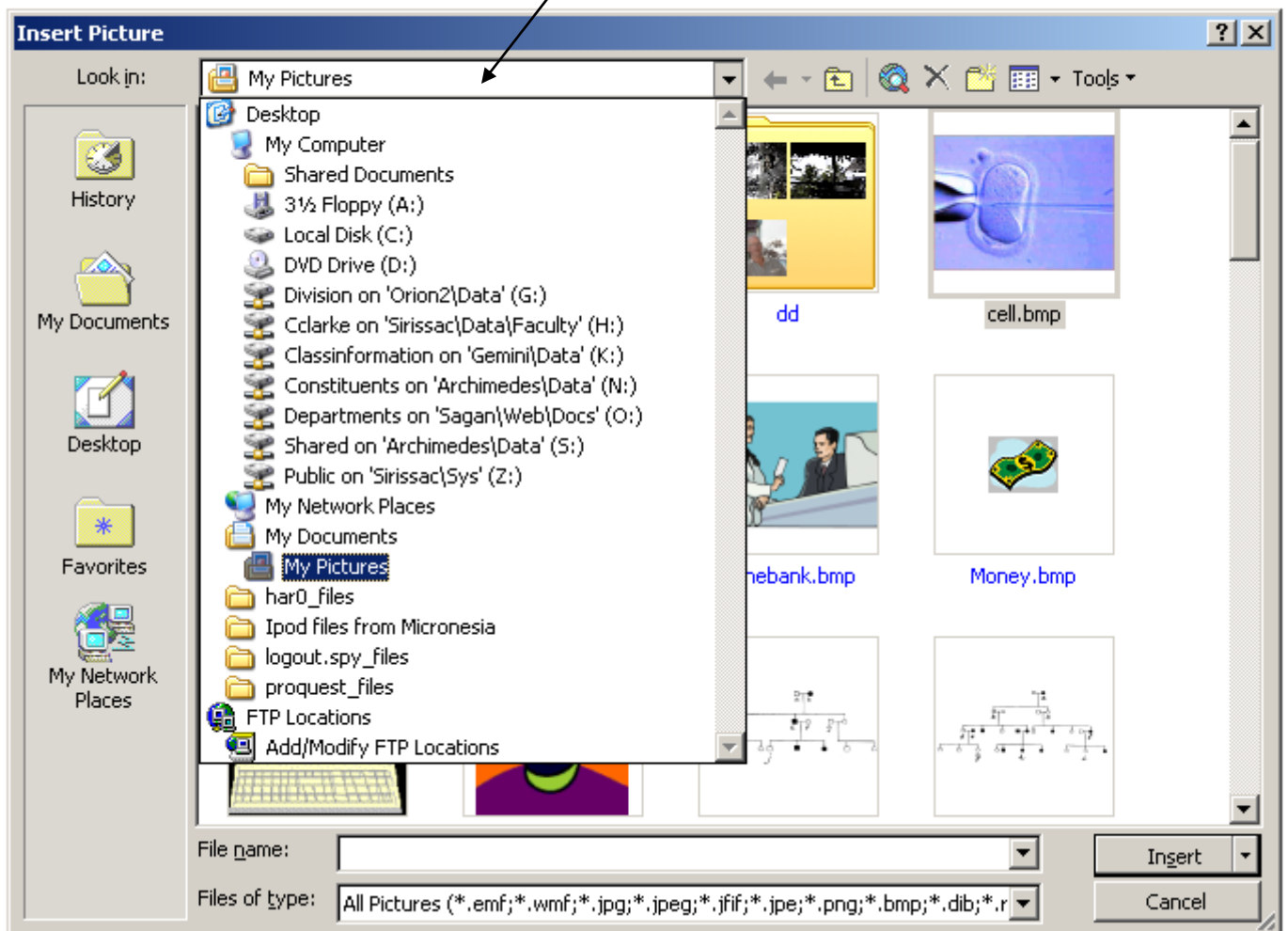
How to I locate my picture?

Go to Insert, then cick on this icon, called Picture.

This Dialogue Box appears.

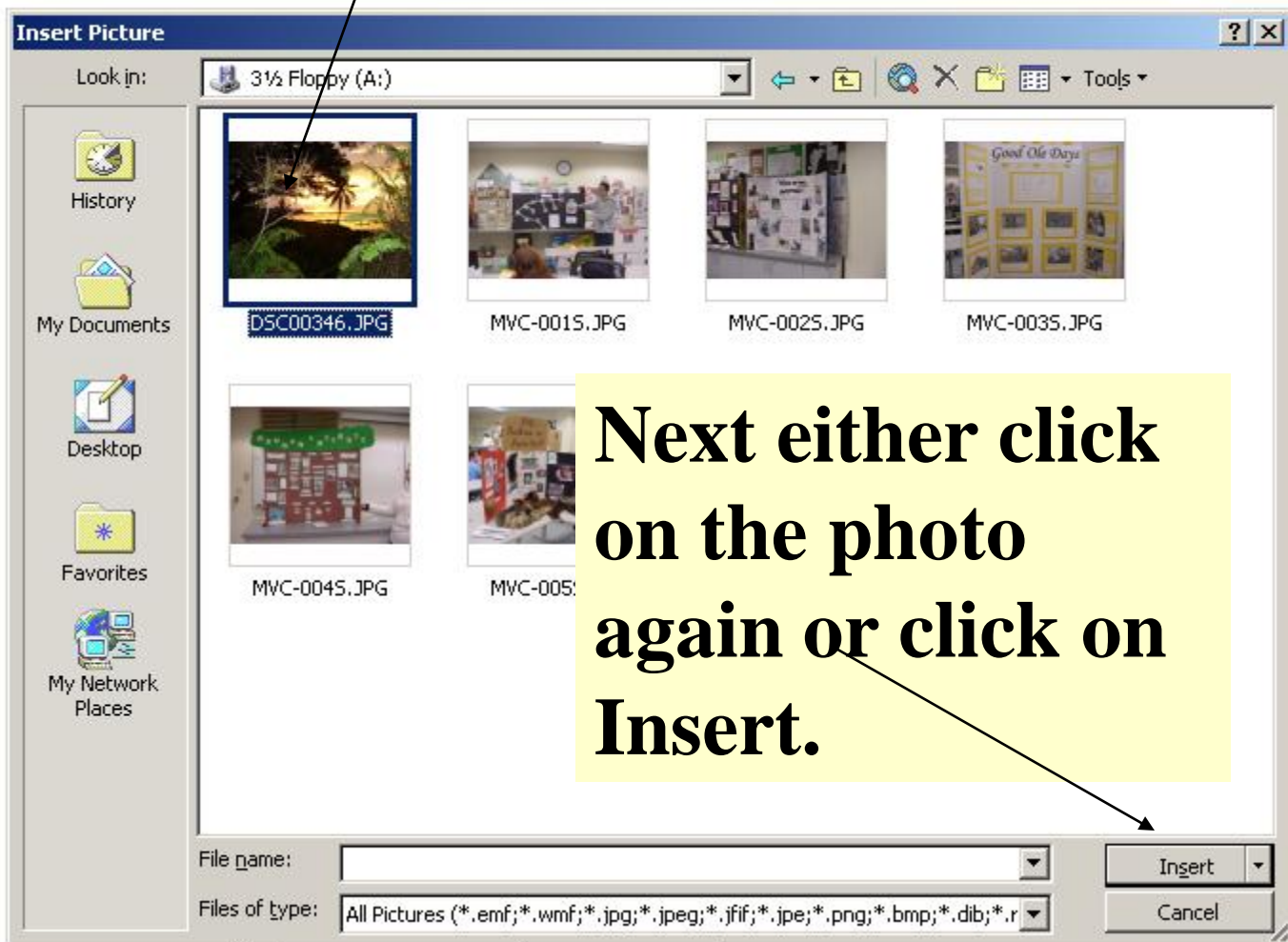
My picture is located on Disk A, so I need to select that disk here.

President of Student Services. Within the allotted 2 hour time frame I procured 31



Okay, I clicked on the photo in the top left corner (see how it is highlighted?).

President of Student Services. Within the allotted 2 hour time frame I procured 31



investigate how exotic and seemingly inexplicable cultural patterns may turn out to be everyday strategies for hit-man survival in a particular natural environment. In this article, he offers his own favorite example: Why do people in India -- many of whom are hungry -- refuse to eat beef from the "sacred cows" that are found most everywhere.



Whenever I get into discussions about the influence of practical and mundane Factors on lifestyles, someone is Sura Co say: "But what about all these cows the hungry peasants in

Done!

**We need to word wrap this photo.
Go to the tutorial that shows how
next.**