

# How to Create a Textbox

2007

# The Basic Knowledge that the Average Person has About the Neanderthal

## Student Name

### Introduction

The presence of *Homo sapiens neanderthalensis*, the species also known as the Neanderthal, has been dated toward the end of the Pleistocene Ice Age about 230,000 years ago and was in existence until 30,000 years ago (Robinson 2001). It is also possible that they first emerged around 300,000 years ago.

The timing for the emergence of Neanderthals is wrapped up in the debate concerning many other species, including *Homo ergaster*, *Homo erectus*, and *Homo antecessor*. Fossil record leads scientists to believe the latest ancestor of Neanderthals that originated in Africa was *Homo ergaster*, which evolved into *H. antecessor*. As a population of *H. antecessor* migrated through the Middle East to Europe they slowly evolved into *H. heidelbergensis* and later into Neanderthals. The remaining population of *H. antecessor* that stayed in Africa evolved into *H. sapiens* (Nature's Holism, 2004). Neanderthal fossils have been found in west Asia, Middle East, and mostly in Europe (Dallmeier 1999).

Since Neanderthals lived at the end of the Ice Age in the northern regions of the world, their bodies were well adapted to cold environments (Robinson, 2001). They exhibited characteristics of Allen's rule that says animals living in cold climates tend to have short, stocky limbs for better heat conservation (Scupin and DeCorse, 2004). Their

You decided to include a photo with a caption in your paper.

Inserting a photo and word wrapping it are covered in other tutorials, so we will skip ahead to adding a textbox for our caption.

The timing for the emergence of Neanderthals is wrapped up in the debate concerning many other species, including *Homo ergaster*, *Homo erectus*, and *Homo antecessor*. Fossil



record leads scientists to believe the latest ancestor of Neanderthals that originated in Africa was *Homo ergaster*, which evolved into *H. antecessor*. As a population of *H. antecessor* migrated through the Middle East to Europe they slowly evolved into *H. heidelbergensis* and later into Neanderthals.

The remaining population of *H. antecessor* that stayed in Africa evolved into *H. sapiens* (Nature's Holism, 2004). Neanderthal fossils have been found in west Asia, Middle East, and mostly in Europe (Dallmeier 1999).

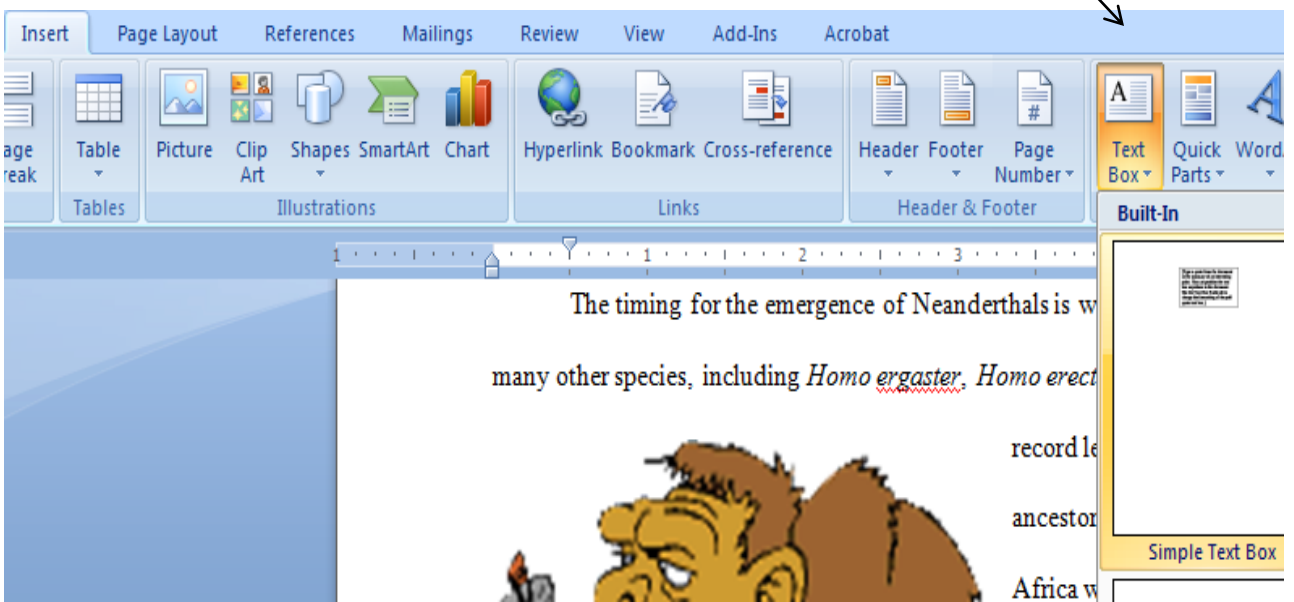
Since Neanderthals lived at the end of the Ice Age in the northern regions of the world, their bodies were well adapted to cold environments (Robinson, 2001). They exhibited characteristics of Allen's rule that says animals living in cold climates tend to have short, stocky limbs for better heat conservation (Scupin and DeCorse, 2004). Their average height was 5'5" and their bones were robust also showing signs that they were very muscular. Muscularity was

Okay, so here is the photo. Note it is less than ½ the width of the typed text.

Now we need to add a textbox for our caption

First click on the Insert button.

The Text Box option will appear.



Pick the textbook in the upper left corner for a standard look. The one called “Simple Text Box”

The timing for the emergence of Neanderthals is wrapped up in the debate concerning many other species, including *Homo ergaster*, *Homo erectus*, and *Homo antecessor*. Fossil



record leads scientists to believe the latest ancestor of Neanderthals that originated in Africa was *Homo ergaster*, which evolved into *H. antecessor*. As a population of *H. antecessor* migrated through the Middle East to Europe they slowly evolved into *H. heidelbergensis* and later into Neanderthals. The remaining population of *H. antecessor*

[Type a quote from the document or the summary of an interesting point. You can position the text box anywhere in the document. Use the Text Box Tools tab to change the formatting of the pull quote text box.]

ure's Holism, 2004). Neanderthal fossils have in Europe (Dallmeier 1999). Ice Age in the northern regions of the world, ats (Robinson, 2001). They exhibited

characteristics of Allen's rule that says animals living in cold climates tend to have short, stocky limbs for better heat conservation (Scupin and DeCorse, 2004). Their average height was 5'5" and their bones were robust also showing signs that they were very muscular. Muscularity was

Once the textbox appears, you will need to drag it into position. Then resize it to match the width of the photo.

You are ready to type in your caption.

The timing for the emergence of Neanderthals is written in the fossil record of many other species, including *Homo ergaster*, *Homo erectus*



record lea  
ancestor o  
Africa wa  
*H. anteces*  
*antecessor*  
to Europe  
*heidelberg*  
The remai

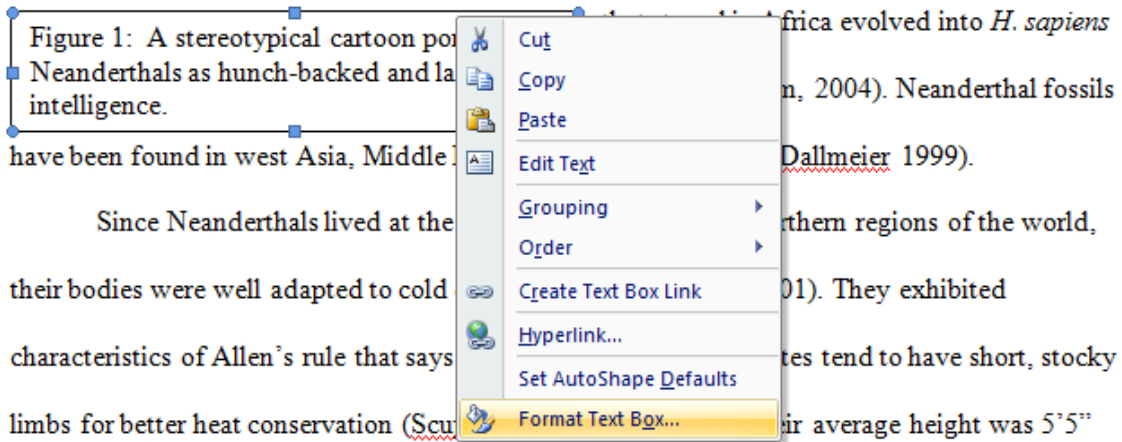
Figure 1: A stereotypical cartoon portraying Neanderthals as hunch-backed and lacking in intelligence.

ure's Holis  
in Europe

Since Neanderthals lived at the end of the Ice Age in their bodies were well adapted to cold environments (Robin:

Now that I have my caption typed there are two aesthetic issues to address:

- 1) I need to word wrap the textbox (see the tutorial)
- 2) I want to remove the border.



There is one trick to working with textboxes: You need to click directly on the border to activate the menu displayed.

Next, select “Format Text Box” option.

Be sure to click on the “Colors and Lines” tab.

The presence of *Homo*  
Neanderthal, has been dated t  
and was in existence until 30,  
emerged around 300,000 year  
The timing for the em  
many other species, including

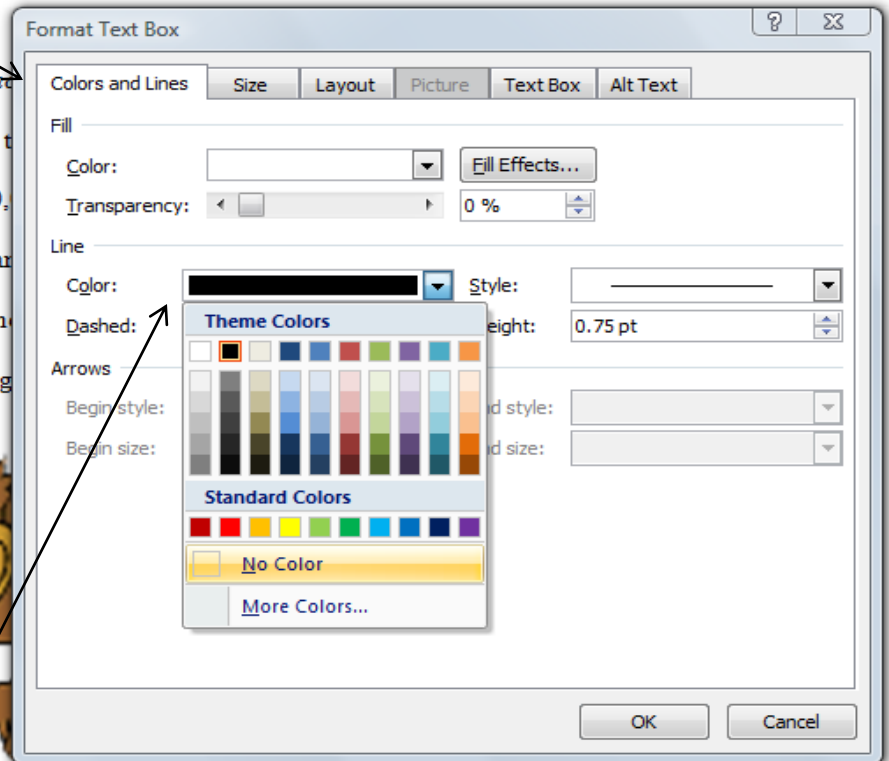
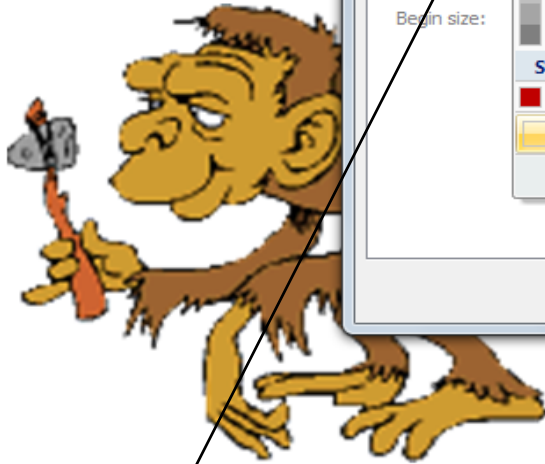


Figure 1: A stereotypical cartoon portraying Neanderthals as hunch-backed and lacking in intelligence.

*heidelbergensis* and later into Neanderthals.

The remaining population of *H. antecessor*

that stayed in Africa evolved into *H. sapiens*

(Nature’s Holism, 2004). Neanderthal fossils

have been found in west Asia, Middle East, and mostly in Europe (Dallmeier 1999). These

Then, click on the option for Color  
Select “No Color” and then “OK”



Figure 1: A stereotypical cartoon portraying Neanderthals as hunch-backed and lacking in intelligence.

record leads scientists to believe the latest ancestor of Neanderthals that originated in Africa was *Homo ergaster*, which evolved into *H. antecessor*. As a population of *H. antecessor* migrated through the Middle East to Europe they slowly evolved into *H. heidelbergensis* and later into Neanderthals. The remaining population of *H. antecessor* that stayed in Africa evolved into *H. sapiens* (Nature's Holism, 2004). Neanderthal fossils

have been found in west Asia, Middle East, and mostly in Europe (Dallmeier 1999). These fossils contradict the stereotype of Neanderthals as seen in Figure 1.

Since Neanderthals lived at the end of the Ice Age in the northern regions of the world, their bodies were well adapted to cold environments (Robinson, 2001). They exhibited characteristics of Allen's rule that says animals living in cold climates tend to have short| stocky

Last, remember to add text that refers to the photo as Figure 1 such as that I added in the example above.